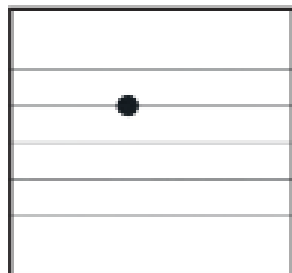


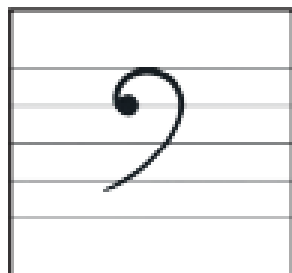


This is a bass clef. It is used in written music to show notes below middle C. Follow these steps to learn how to draw a bass clef.

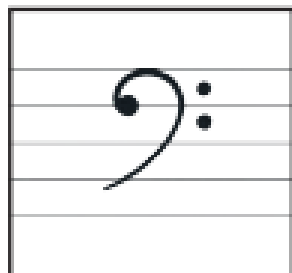
Use your manuscript book to practise drawing a treble clef.



1. Draw a circle over the fourth stave line and fill it in.



2. From the top left of the circle, draw a curved line going up to touch the top stave and then around. Continue diagonally down in a curve just past the second stave line.



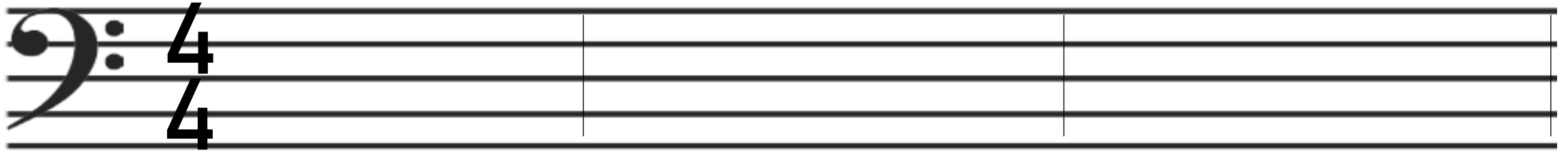
3. On the right of your clef, draw one circle that sits in the middle of the space between the fourth and fifth stave lines and another that sits in the middle of the space between the third and fourth stave lines. Fill them in.

Circle your best one.

Add this time signature next to the bass clef



Now add 3 bar lines on the staff in your manuscript book



Let's compose a tune! Do as many as you like.



Have a go at composing a little tune using the notes below. Remember that each bar adds up to 4 beats.



whole note - 4 beats



half note - 2 beats



quarter note - 1 beats