

Compose a tune in the treble and then the bass clef in
3 time

4

Use these notes
and rests in your
compositions.

Dotted half note

3 beats

Half note

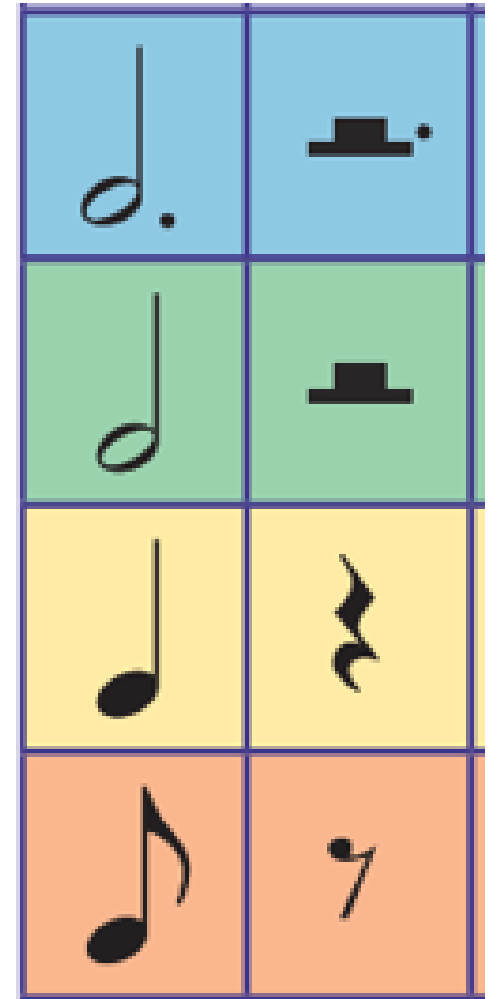
2 beats

Quarter note

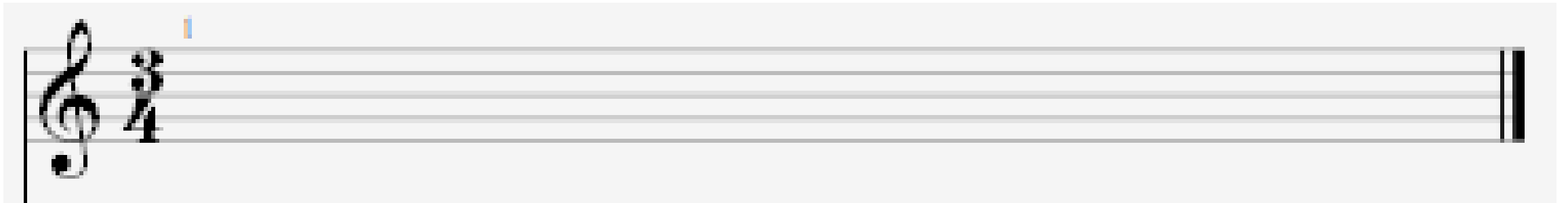
1 beat

Eighth note

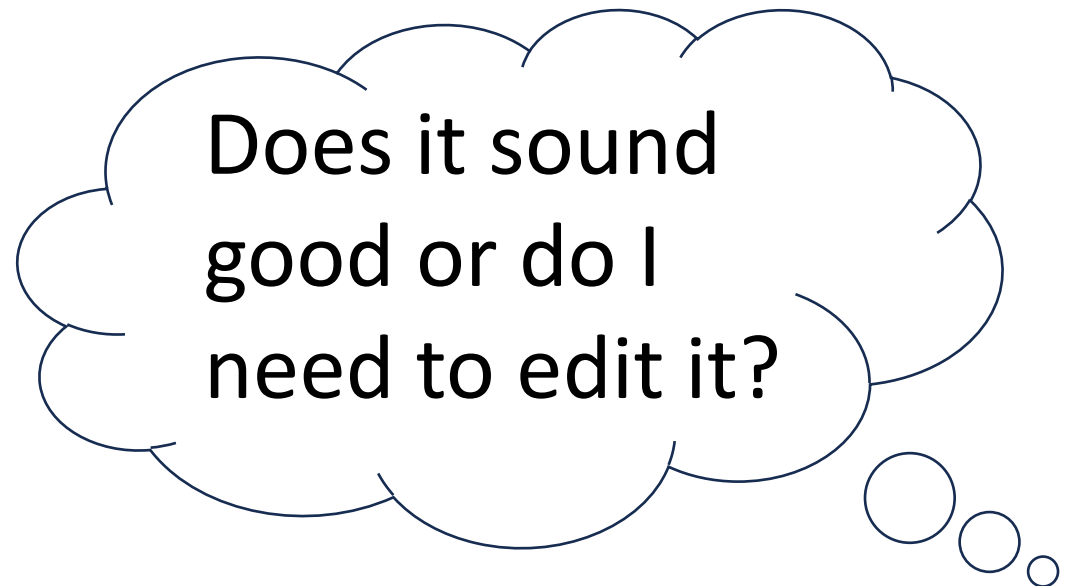
$\frac{1}{2}$ beat



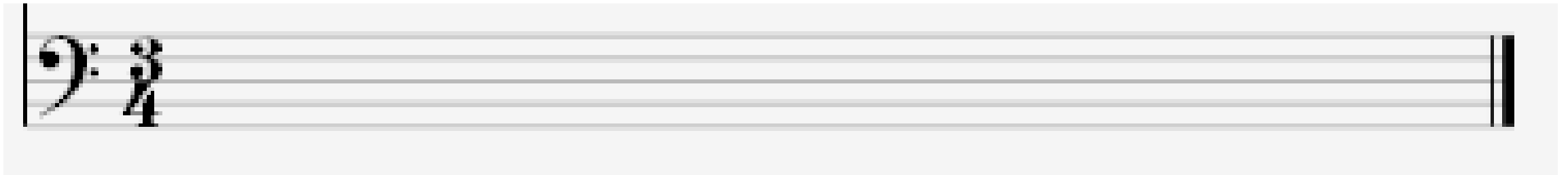
Draw the treble clef on your stave and write the time signature.



You can write up to 6 bars long if you want to.



Now try a composition in the bass clef and write the time signature.



You can write up to 6 bars long if you want to.

