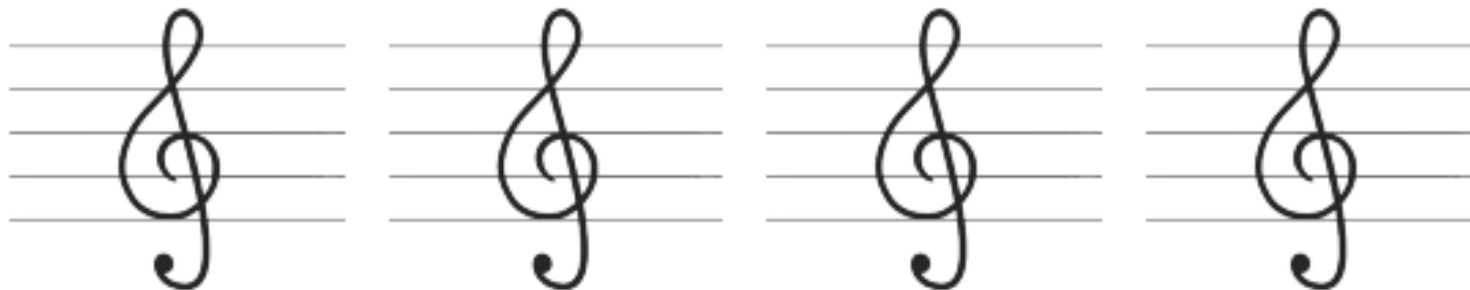


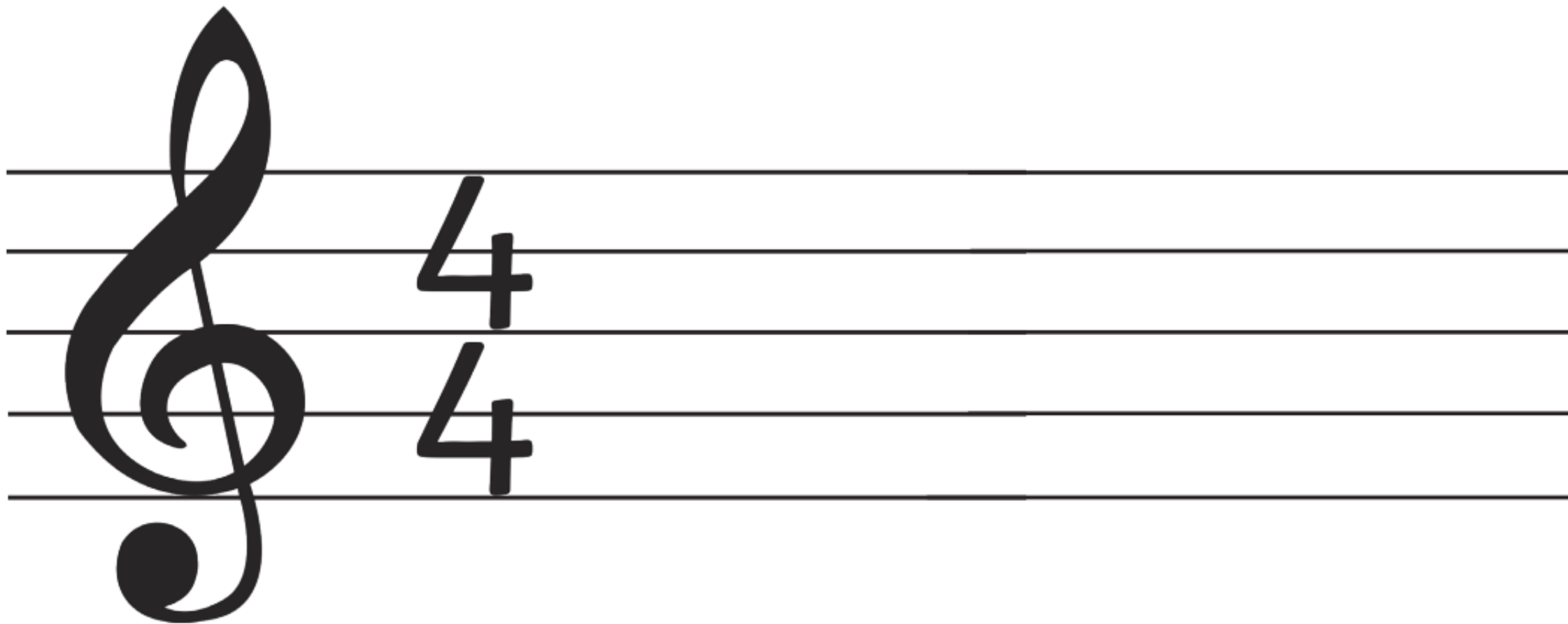
## How To Draw a Treble Clef

Use your manuscript book to practise drawing a treble clef.

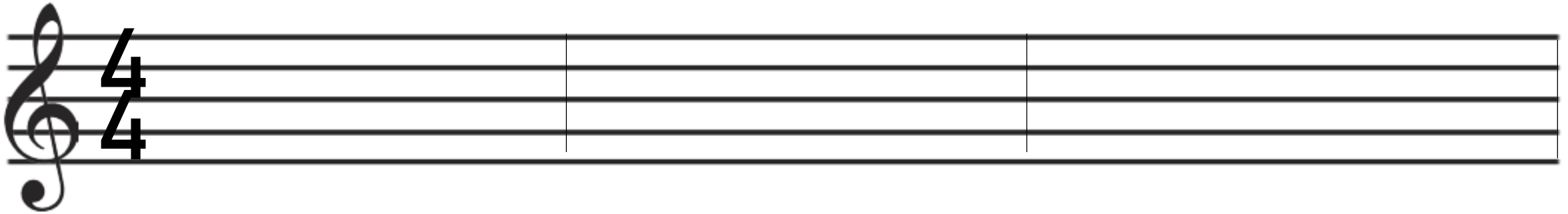
**Follow the steps below to practice drawing your own treble clefs. Circle your best one.**



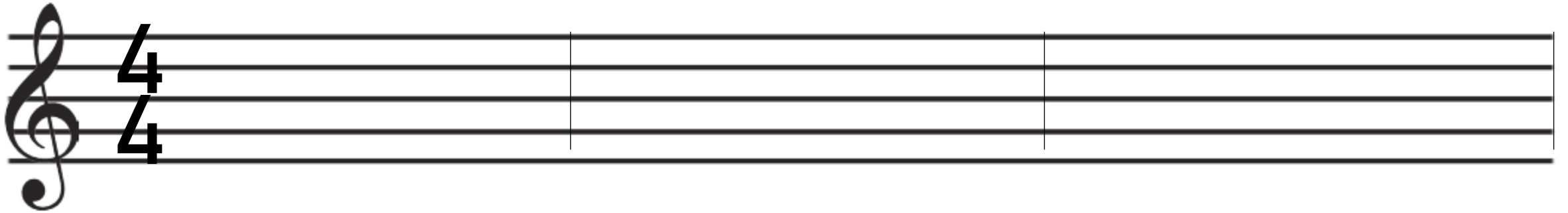
Add this time signature next to the treble clef



Now add 3 bar lines on the staff in your manuscript book



Let's compose a tune! Do as many as you like.



Have a go at composing a little tune using the notes below. Remember that each bar adds up to 4 beats.



whole note - 4 beats



half note - 2 beats



quarter note - 1 beats