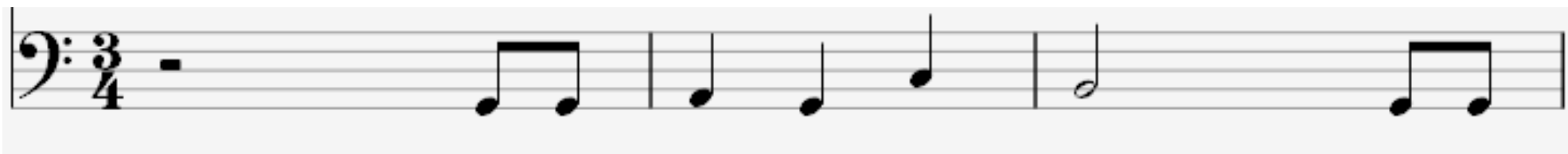


Have a go at reading and playing these well known tunes
in the bass clef.

Happy Birthday



Ode to Joy

pno.

1 2 3 4

5 6 7 8

The image shows a musical score for the piece 'Ode to Joy' in 4/4 time, marked 'pno.' (piano). The score is presented in two systems, each with two staves. The first system is numbered 1-4 and the second system is numbered 5-8. The bass clef staff contains the melody, while the treble clef staff is empty. The melody consists of a sequence of eighth notes in the first two measures of each system, followed by a quarter note and a half note in the third measure, and a dotted quarter note and an eighth note in the fourth measure.

Ode to Joy

Musical score for 'Ode to Joy', measures 9 through 16. The score is presented in two systems, each with a treble clef staff (top) and a bass clef staff (bottom). The bass clef staff contains the melody, while the treble clef staff is empty. The measures are numbered 9 through 16. The melody consists of eighth and quarter notes, with some beamed eighth notes. The piece concludes with a double bar line at the end of measure 16.

Measures 9-12:

- Measure 9: Bass clef, treble clef empty. Notes: G2, A2, B2, C3.
- Measure 10: Bass clef, treble clef empty. Notes: D3, E3, F3, G3.
- Measure 11: Bass clef, treble clef empty. Notes: A3, B3, C4, D4.
- Measure 12: Bass clef, treble clef empty. Notes: E4, F4, G4, A4.

Measures 13-16:

- Measure 13: Bass clef, treble clef empty. Notes: B4, C5, D5, E5.
- Measure 14: Bass clef, treble clef empty. Notes: F5, G5, A5, B5.
- Measure 15: Bass clef, treble clef empty. Notes: C6, D6, E6, F6.
- Measure 16: Bass clef, treble clef empty. Notes: G6, A6, B6, C7.