

f loud

Loud or soft?

p soft

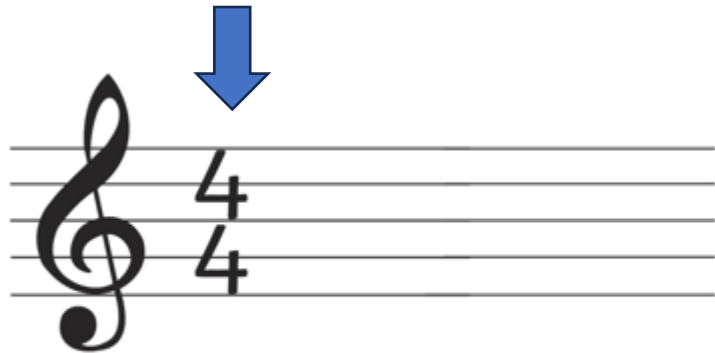
Imagine how each picture sounds.

Write a *f* for loud or *p* for soft for each picture.



Time Signatures

- 4** The top number shows how many beats are in a bar
- 4** The bottom number shows the type of musical beat
4 – quarter note beat



Time signatures are always written after the treble clef.

Be the teacher

Can you spot any mistakes? There should be 4 beats in each bar.

